

Alsipercha / Alupercha

Rail



+ Features

EN:795:2012 – Type D
ANSI/ASSE Z359.18-2017 Type D

- 1 Overhead fall protection system that protect users from falls during work at heights. (Fall factor 0).
- 2 Built-in energy-absorbing device that reduces the impact forces transferred to the user and to the structure in the event of a fall.
- 3 Alsipercha/Alupercha combination with rigid lifeline. **Up to 2 users at the same time per 6m span.**
- 4 Easy, intuitive installation. Installation in just a few hours.
- 5 The user is connected using a fall arrester device that is connected to the Alsipercha/Alupercha and to the harness.
- 6 Protect users from falls from heights during maintenance work in industrial environments, loading and unloading trucks, maintenance on trains, buses, etc.

AVAILABLE COMBINATIONS	Alsipercha Alupercha	+ Column Clamps	+ Rail
		+ Tripod	
		+ MF counterweight	
		+ Post for reduced spaces	
		+ Wall bracket	
		+ Mobile Base Unit	

+ Elements



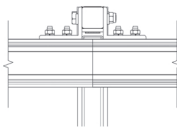
Installation
with crane /manual



x2 Users
allowed



Alsipercha / Alupercha.
Main anchoring point.



Rail assembly.
Rigid lifeline.



Hook.
To bring the next Alsipercha / Alupercha closer.



Retractable device.
Device that locks the descent in the event of a fall.



Harness.
PPE that must be worn by the user.



Sling.
For installation using a crane.